

HZM



HZM 807T TELESCOPIC LOADER



807T
TELESCOPIC
LOADER





SPECIFICATIONS

Specification	Overall weight(kg)		1670
	L×W×H (mm)	With tents	3460x1050x2300
		With cabin	3460x1050x2110
	Rated bucket capacity(m ³)		0.4
	Rated load(kg)		600
	Max.Lifting height (mm)		2800
	Max.Dump height (mm)		2450
	Max.Dump distance(mm)		1100
	Wheel base(mm)		2320
	Thread(mm)		1500
	Total time(s)		≤8.0
	Driving Speed		0-12km/h
Engine	Model		PERKINS 403J-11
	Type		Direct injection, Horizontal, Water-cooled, Three stroke
	Rated power (KW)		18.4
	Rated speed(r/min)		2400
Control system	Static hydraulic system		
Drive Axle	Motor drive Axle		
Steering system	Max. turning angle	±68°	
	Min turning radius(mm)	1989mm	
Tires	Standard tires	26X1200-16 TIRE	

HZM

www.HZM.co.za



ROPS&FOPS CABIN



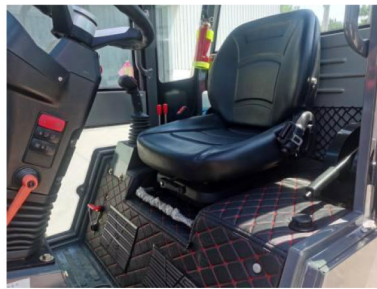
ADJUSTABLE STEERING WHEEL



ELECTRICAL SHIFT



EUROPE LINK FRAMES



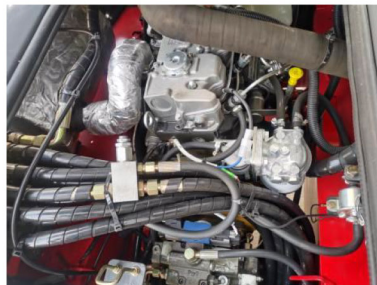
ADJUSTABLE SEAT



PRESSURE GAUGE



FOUR WAY HYDRAULIC LINE



PERKINS 403J-11 EU5 ENGINE 18.4KW



EUROPE ONE QUICK HITCH



ITALY 25 AXLE



26X1200-16 AG TIRES



STANDARD BUCKET

www.HZM.co.za